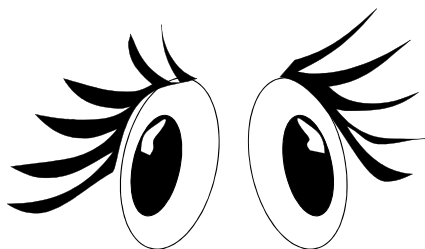


Basic Addition Fact Strategy: Doubles

Graphic Display

$1 + 1 = 2$



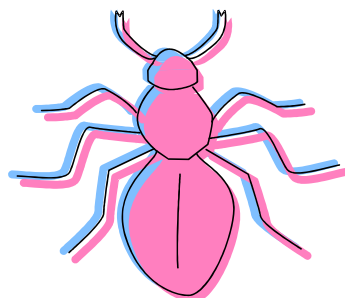
Eyes

$2 + 2 = 4$



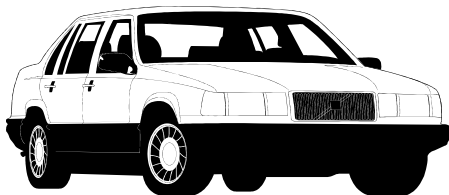
Animal with four legs

$3 + 3 = 6$



Legs on an insect

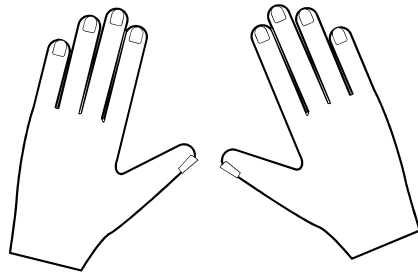
$4 + 4 = 8$



Tires on two cars

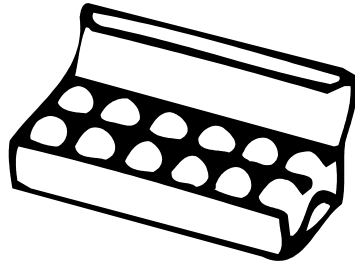


$5 + 5 = 10$



Fingers on two hands

$6 + 6 = 12$



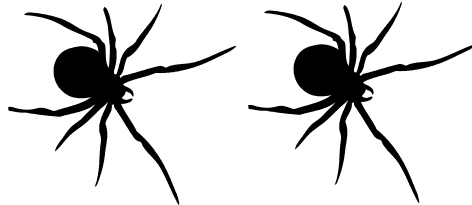
A dozen eggs in a carton

$7 + 7 = 14$

Sun	Mon	Tue	Wed	Thu	Fri	Sat
x	x	x	x	x	x	x
x	x	x	x	x	x	x

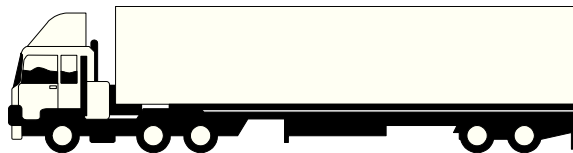
Days in two weeks

$8 + 8 = 16$



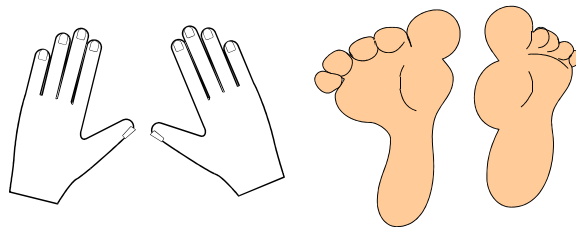
Legs on two spiders

$9 + 9 = 18$



Tires on an
eighteen wheeler

$10 + 10 = 20$



Fingers and Toes