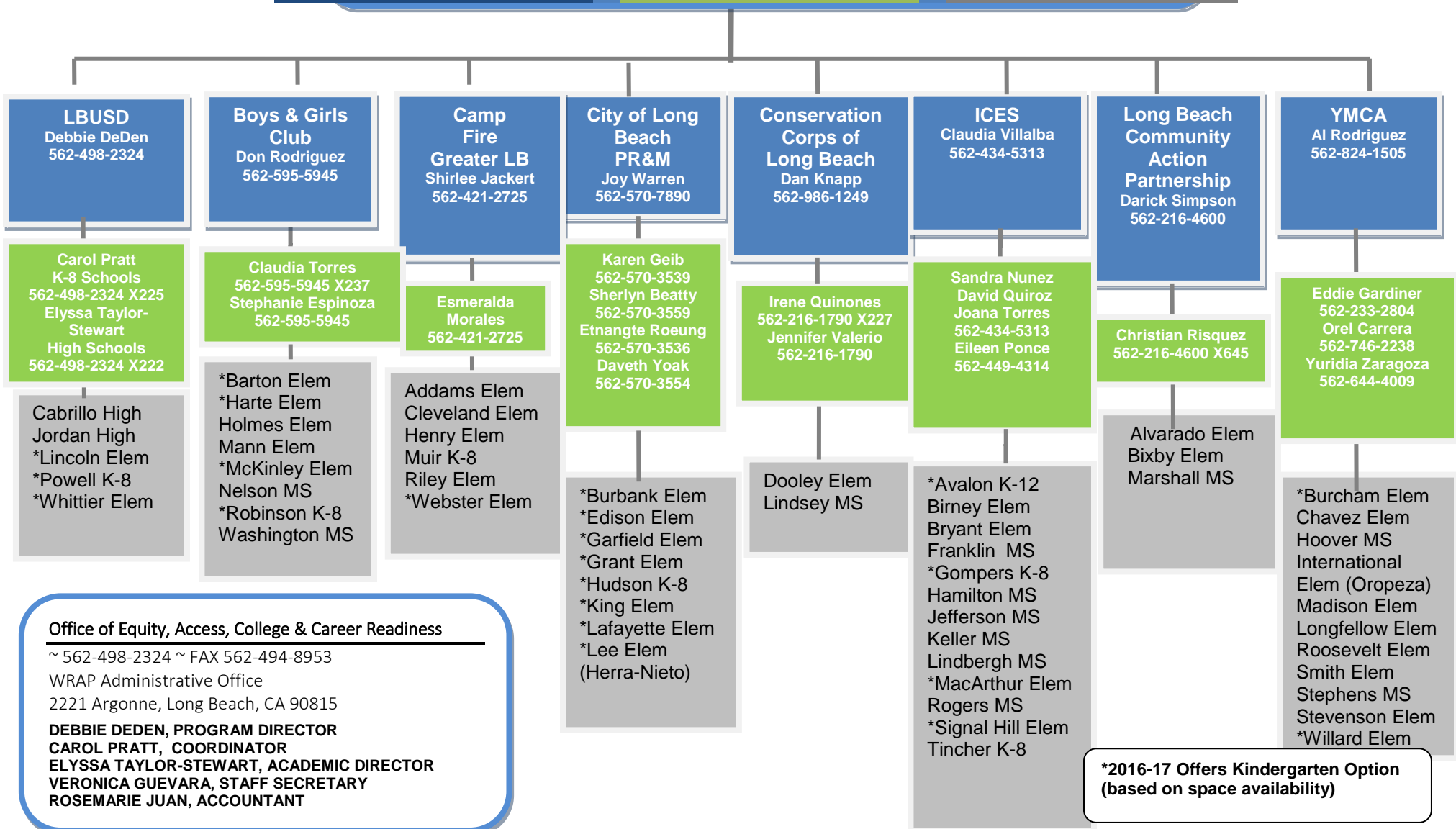




LBUSD Expanded Learning Program WRAP Winners Reaching Amazing Potential 2016-17

A Long Beach Community Partnership
ASES, 21st Century Community Centers and ASSETS Funded
<http://www.lbschools.net/Departments/WRAP/>



Office of Equity, Access, College & Career Readiness

~ 562-498-2324 ~ FAX 562-494-8953

WRAP Administrative Office

2221 Argonne, Long Beach, CA 90815

DEBBIE DEDEN, PROGRAM DIRECTOR

CAROL PRATT, COORDINATOR

ELYSSA TAYLOR-STEWART, ACADEMIC DIRECTOR

VERONICA GUEVARA, STAFF SECRETARY

ROSEMARIE JUAN, ACCOUNTANT

***2016-17 Offers Kindergarten Option
(based on space availability)**