

Parents: supporting learners on Khan Academy

Long Beach USD
November 9, 2017

Agenda

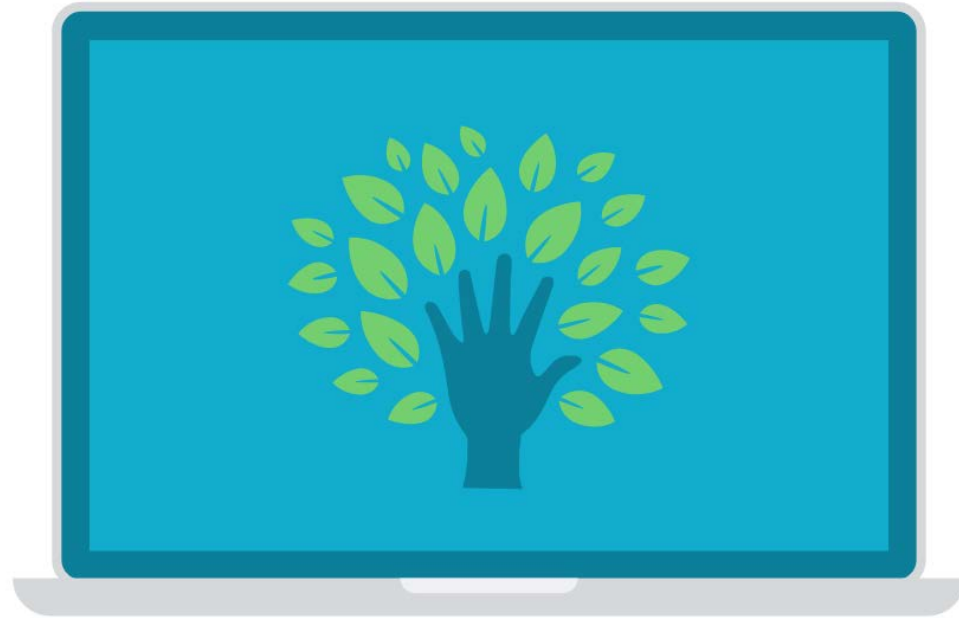
TODAY

Section 1: What is Khan Academy?

Section 2: How is LBUSD implementing Khan Academy?

Section 3: How can parents get involved?

Section 4: Q&A



Practice across subjects and grades.
Instant feedback for students.
Instant data for teachers.



Math by subject

[Early math](#)
[Arithmetic](#)
[Pre-algebra](#)
[Algebra 1](#)
[Geometry](#)
[Algebra 2](#)
[Trigonometry](#)
[Precalculus](#)
[Statistics & probability](#)
[AP Calculus AB](#)
[AP Calculus BC](#)
[AP Statistics](#)
[Multivariable calculus](#)
[Differential equations](#)
[Linear algebra](#)

Math by grade

[Kindergarten](#)
[1st](#)
[2nd](#)
[3rd](#)
[4th](#)
[5th](#)
[6th](#)
[7th](#)
[8th](#)
[Eureka Math/EngageNY](#)
[High school](#)

Science & engineering

[Physics](#)
[AP Physics 1](#)
[AP Physics 2](#)
[Cosmology & astronomy](#)
[Chemistry](#)
[AP Chemistry](#)
[Organic chemistry](#)
[Biology](#)
[AP Biology](#)
[Health & medicine](#)
[Electrical engineering](#)

Computing

[Computer programming](#)
[Computer science](#)
[Hour of Code](#)
[Computer animation](#)

Arts & humanities

[World history](#)
[AP World History](#)
[US history](#)
[AP US History](#)
[Art history](#)
[AP Art History](#)
[Grammar](#)

Economics & finance

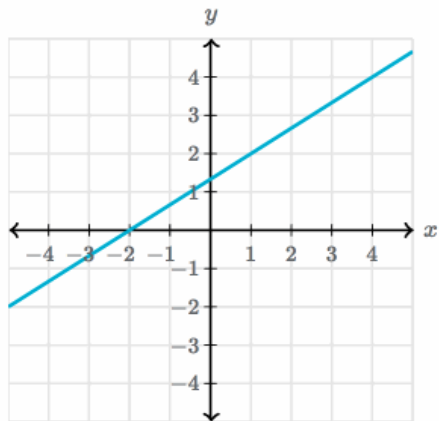
[Microeconomics](#)
[Macroeconomics](#)
[AP Microeconomics](#)
[AP Macroeconomics](#)
[Finance & capital markets](#)

Test prep

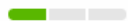
[SAT](#)
[MCAT](#)
[GMAT](#)
[IIT JEE](#)
[NCLEX-RN](#)

College, careers, & more

[College admissions](#)
[Careers](#)
[Personal finance](#)
[Entrepreneurship](#)



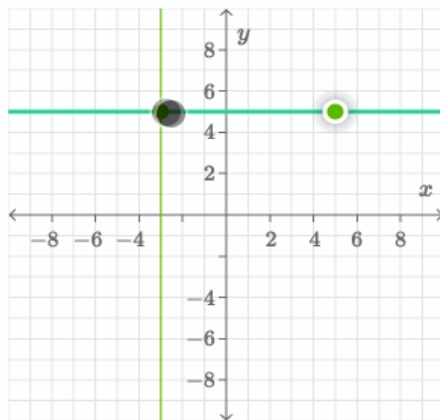
What is the slope of the line?



Check

Standard: 8.ee.b.5

Graph $y = -\frac{1}{3}x + 5$.



Stuck? [Watch a video](#) or [use a hint](#).



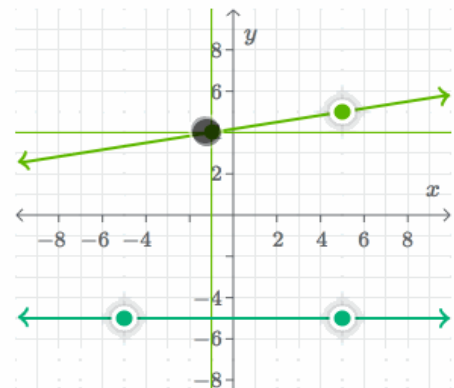
Check

Standard: 8.f.a.3

$$y = \frac{1}{2}x + 3$$

$$y = x + 1$$

Graph the system of equations.



Check

Standard: 8.ee.c.8



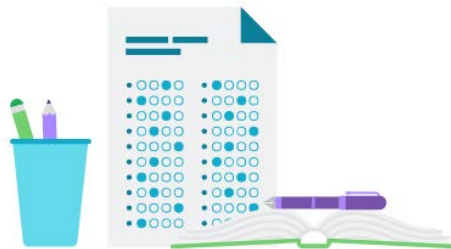
Proven results for
students



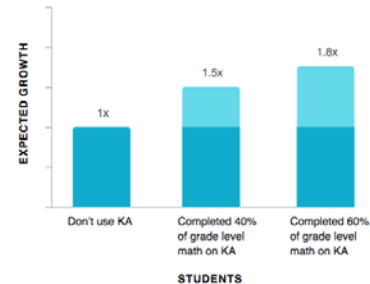
PROVEN RESULTS FOR STUDENTS

64%

of **first generation** students from top universities say that Khan Academy was a meaningful part of their education



20 hours of practice on KA's Official SAT Practice associated with a 115-point average score increase from PSAT to SAT. (n = 250,000)



Students who complete 60% of their grade-level math on KA experience 1.8 times their expected growth on the NWEA MAP Test. (n = 10,500)

Read more at khanacademy.org/about/impact

TODAY

Section 1: **What is Khan Academy?**

Section 2: **How is LBUSD implementing Khan Academy?**

Section 3: **How can parents get involved?**

Section 4: **Q&A**



Official SAT Practice



Pilot groups



General awareness, training, and support

TODAY

Section 1: **What is Khan Academy?**

Section 2: **How is LBUSD implementing Khan Academy?**

Section 3: **How can parents get involved?**

Section 4: **Q&A**

How can parents get involved?

- ❑ Create an account at khanacademy.org
- ❑ Add your child to your account so you can celebrate their progress.
- ❑ Encourage them to work ahead, to challenge themselves, and to use appropriate resources when stuck.

7 tips for supporting your child

1. Monitor their progress
2. Celebrate successes, learn from challenges
3. Set an example
4. Engage teachers and other parents
5. Make Khan Academy a family activity
6. Set goals and milestones
7. Reward them for meeting goals

TODAY

Section 1: **What is Khan Academy?**

Section 2: **How is LBUSD implementing Khan Academy?**

Section 3: **How can parents get involved?**

Section 4: **Q&A**

FOR MORE INFORMATION

Visit www.khanacademy.org/resources and browse the Parent resource section for more information.